

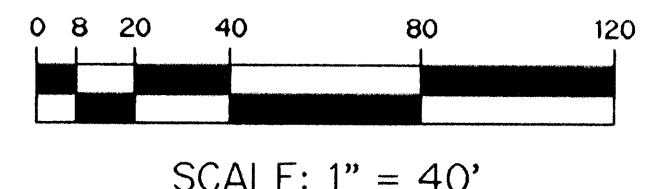
# TIVOLI RESERVE

BEING A REPLAT OF ALL OF TRACTS 10 THROUGH 14, 18 THROUGH 23 AND A PORTION OF TRACTS 9, 15, 16, 17 & 24, BLOCK 58, TOGETHER WITH A PORTION OF THE NORTH ONE-HALF OF THE 30 FOOT RIGHT-OF-WAY ADJOINING THE SOUTH LINE OF SAID TRACTS 17 THROUGH 24, BLOCK 58, PALM BEACH FARMS COMPANY PLAT NO. 3, AS RECORDED IN PLAT BOOK 2, PAGES 45 THROUGH 54, OF THE PUBLIC RECORDS OF PALM BEACH COUNTY FLORIDA AND LYING IN SECTIONS 32 AND 33, TOWNSHIP 45 SOUTH, RANGE 42 EAST, PALM BEACH COUNTY, FLORIDA.

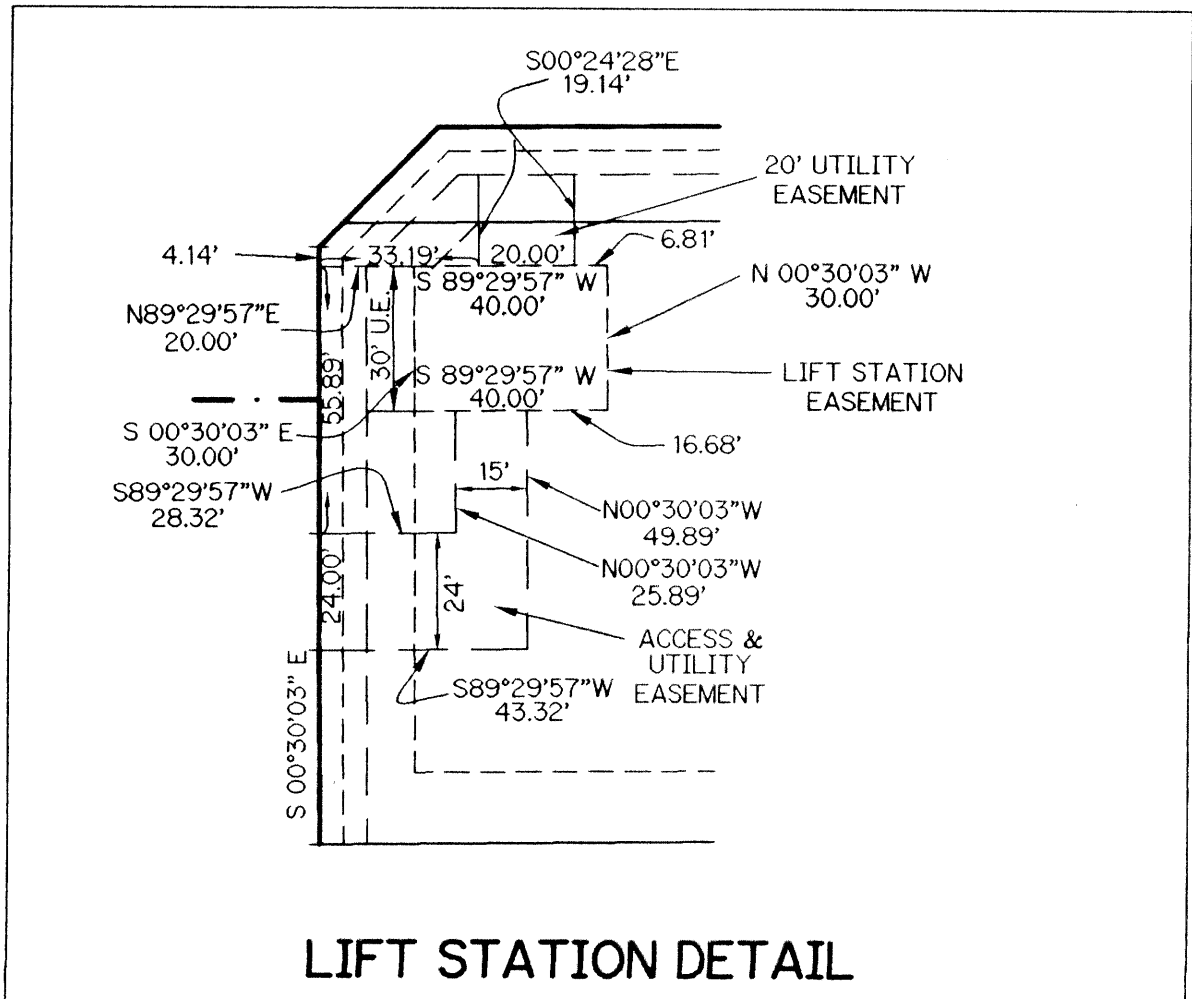
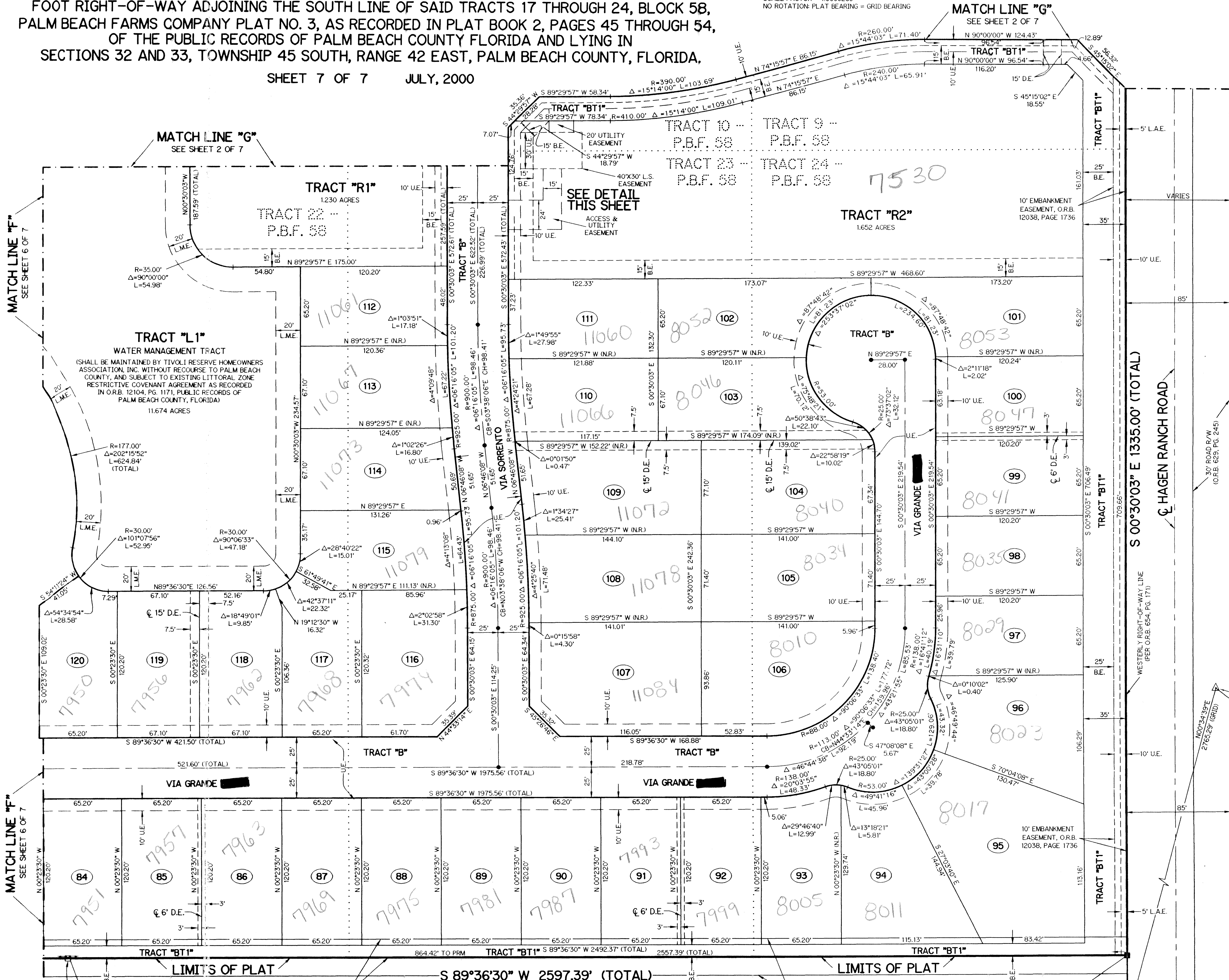
SHEET 7 OF 7 JULY, 2000

**NOTE:**  
 COORDINATES SHOWN ARE GRID COORDINATES  
 DATUM = NAD 83 (1998 ADJUSTMENT)  
 ZONE = FLORIDA EAST ZONE  
 LINEAR UNIT = U.S. SURVEY FEET  
 COORDINATE SYSTEM 1983 STATE PLANE  
 TRANSVERSE MERCATOR PROJECTION  
 ALL DISTANCES ARE GROUND  
 SCALE FACTOR = 1.0000269  
 NO ROTATION: PLAT BEARING = GRID BEARING

THIS INSTRUMENT PREPARED BY  
 WILBUR F. DIVINE, P.S.M. 4190, STATE OF FLORIDA  
 LAWSON, NOBLE AND WEBB, INC., LB-6674  
 ENGINEERS PLANNERS SURVEYORS  
 420 COLUMBIA DRIVE, SUITE 110  
 WEST PALM BEACH, FLORIDA

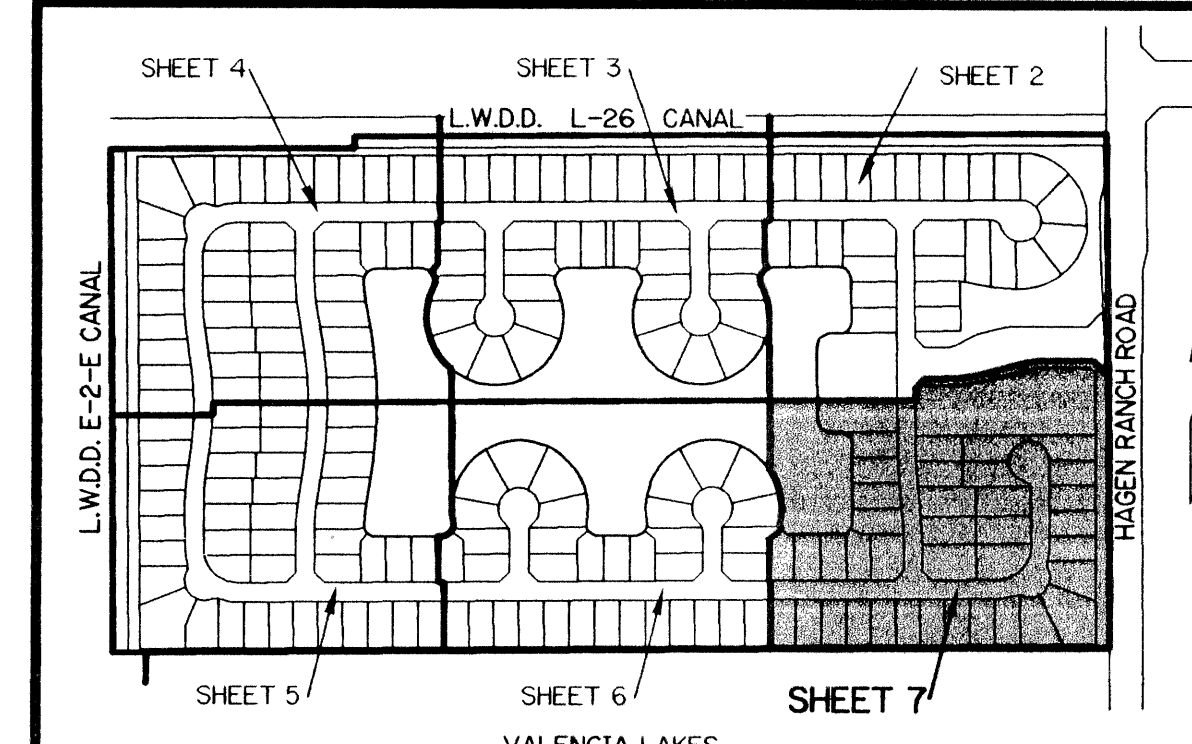


92



**VALENCIA ISLES - PLAT THREE**  
 P.B. 87, PGS. 63-74

- LEGEND:**
- - SET PERMANENT REFERENCE MONUMENT, LB-6674
  - - PERMANENT CONTROL POINT, PSM #4190
  - Δ - DELTA ANGLE
  - B.E. - BUFFER EASEMENT
  - C.L. - CENTERLINE
  - C.B. - CHORD BEARING
  - C.H. - CHORD LENGTH
  - D.B. - DEED BOOK
  - D.E. - DRAINAGE EASEMENT
  - L. - ARC LENGTH
  - L.A.E. - LIMITED ACCESS EASEMENT
  - L.M.A.E. - LAKE MAINTENANCE ACCESS EASEMENT
  - L.M.E. - LAKE MAINTENANCE EASEMENT
  - L.W.D.D. - LAKE WORTH DRAINAGE DISTRICT
  - N.R. - NOT RADIAL
  - N.T.S. - NOT TO SCALE
  - O.R.B. - OFFICIAL RECORD BOOK
  - P.B. - PLAT BOOK
  - P.B.F. - PALM BEACH FARMS COMPANY PLAT NO. 3 (P.B. 2, PG. 50)
  - PGS. - PAGES
  - P.S.M. - PROFESSIONAL SURVEYOR AND MAPPER
  - R. - RADIUS
  - R/W - RIGHT-OF-WAY
  - S.T. - SURVEY TIE
  - U.E. - UTILITY EASEMENT
  - N 814602.857 E 785753.1680 - DENOTES STATE PLANE COORDINATES



FOUND PRM, PSM #4213  
 N 791568.7386 E 928679.9083  
 THE SOUTH 15 FEET OF TRACTS 17-24 QUIT CLAIMED FROM WHITWORTH TO SINCLAIR (O.R.B. 8777, PG. 1507)  
 S 89°36'30" W 2597.39' (TOTAL)  
 VALENCIA LAKES - PLAT ONE  
 (P.B. 78, PGS. 13-23)  
 PALM BEACH FARMS PLAT R/W 30' QUIT CLAIM (O.R.B. 8777, PG. 1498) & (O.R.B. 8777, PG. 1507)  
 N 791574.6464 E 929544.3314  
 501°08'56"E 1393.77' (GRID)  
 ADR BRASS DISK IN CONCRETE PBF 63 (DISTURBED)  
 N 790181.1536 E 929572.2796